



Presentation on Single Project/Programme Implementation Unit (SPIU) in Public Institutions

CEPEX

What is SPIU?

- **A special purpose mechanism for project/programme delivery in the public institutions**



The current status

- **Most Development Partners have more than one PIUs in the same Ministry,**
- **Time-lag in project start due to Team Assembling,**
- **Every project reports to PS/Chief Budget Manager with different reporting format depending on specific requirements of each Donor,**
- **Coordination challenge - difficult in mastering every project,**
- **A big number of evaluation missions for each projects in the same Ministry per year**

December 2009

Single Project Implementation Unit

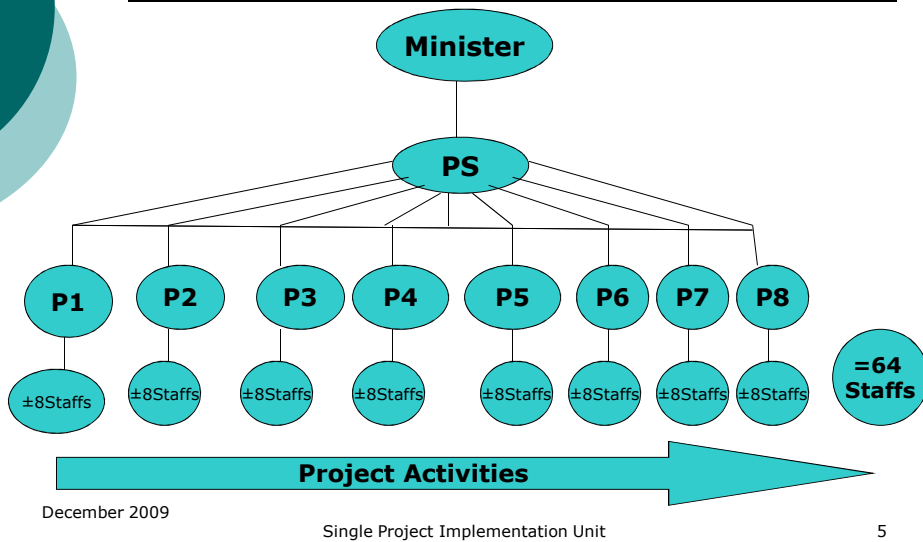
3



The current status (cn't)

- **Team disbanded after the closing of the project,**
- **Little or no inter-project communication (Duplication of same functions in each project in the same Ministry,**
- **CEPEX support to the units is disjointed,**
- **Project mgt function limited only to externally funded projects. Internally funded projects have no management function and are ran as recurrent budget**

Existing project Implementation Structure in the Ministry:



Conclusion

- The current system is:
 - Costly,
 - Does not create synergy,
 - Cause a variety of overlaps and duplication of functions within Ministries
 - No economies of scale gains can be realized

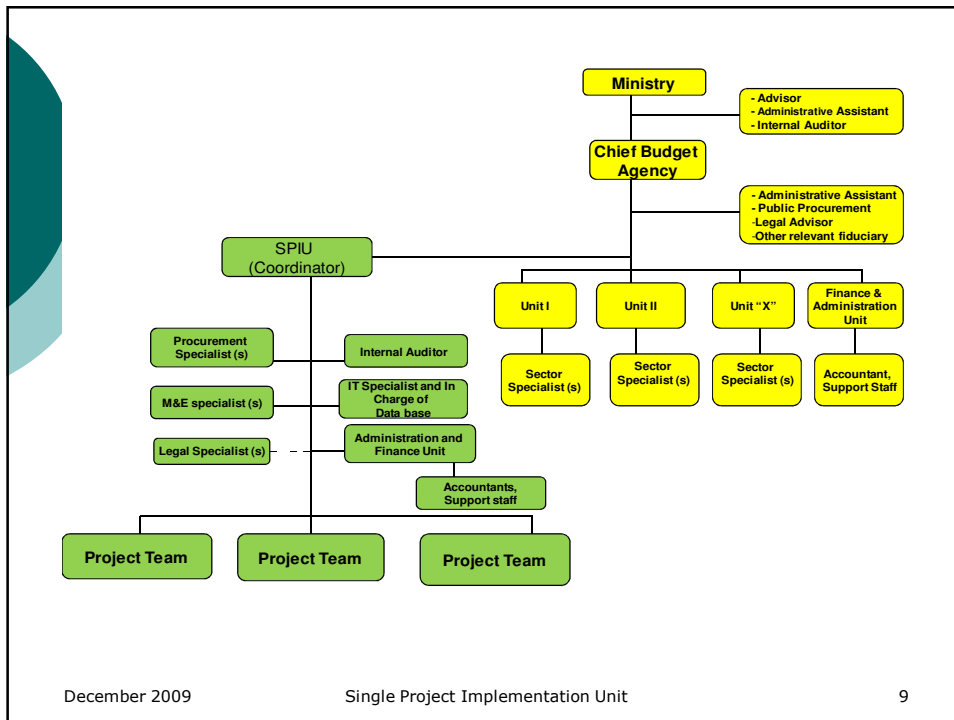


Desired status

- **All projects should be under a Single Project Implementation Unit within the Public Institutions**
- **Implementation and reporting is through the Unit coordinator – single entry**
- **Shared functions (Finance, Procurement, M&E, Legal, Internal Audit,..)**



Proposed SPIU structure in the new Implementation Arrangement



Benefit accruing under single Project Implementation unit

- **Ease coordination & Oversight**
- **Shared functions– Reduce transaction costs**
- **Retain Institutional memory & Expertise**
- **Promote synergy**

Expected Challenges with Deploying SPIUs

- **Setting up processes and expecting everyone to follow them immediately.**
- **Staffing – acquiring experts in project management**
- **Training the staff**
- **Making all projects follow the same approach.**

- **Legal implication – requiring reviewing of some Financing Agreement or change the negotiations of new projects.**

Suggestions & Questions??

